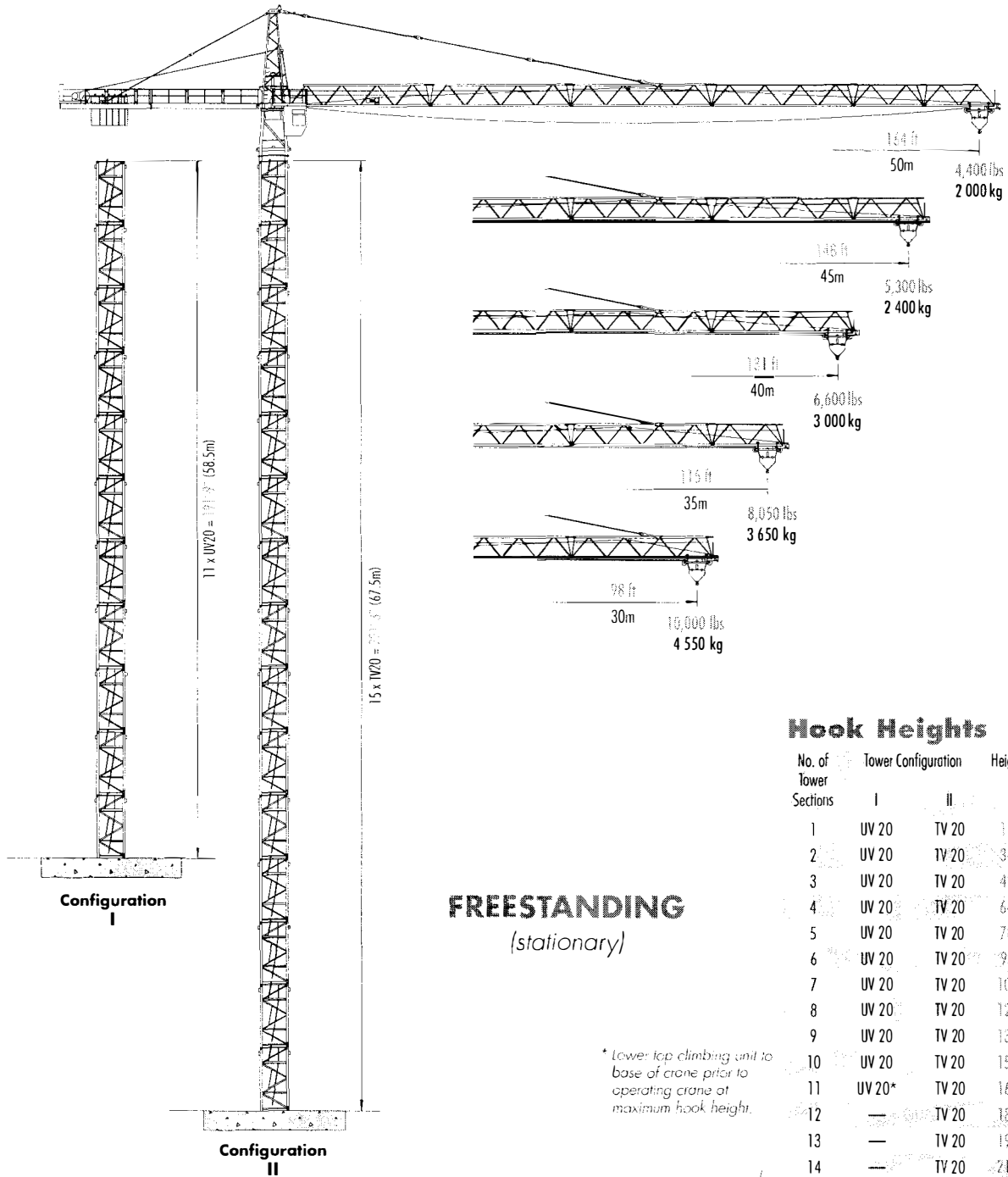


Wolffkran 148 SL

TOWER CRANE



Hook Heights

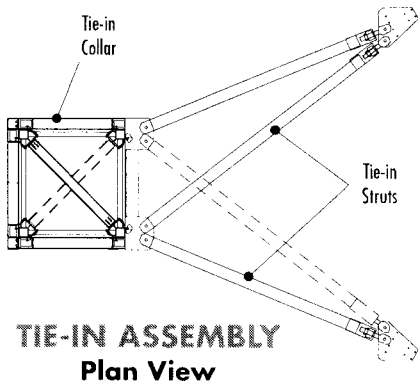
No. of Tower Sections	Tower Configuration		Height Under Hook	
	I	II	ft	m
1	UV 20	TV 20	19.7	6.0
2	UV 20	TV 20	34.4	10.5
3	UV 20	TV 20	49.2	15.0
4	UV 20	TV 20	64.0	19.5
5	UV 20	TV 20	78.7	24.0
6	UV 20	TV 20	93.5	28.5
7	UV 20	TV 20	108.3	33.0
8	UV 20	TV 20	123.0	37.5
9	UV 20	TV 20	137.8	42.0
10	UV 20	TV 20	152.6	46.5
11	UV 20*	TV 20	167.3	51.0
12	—	TV 20	182.0	55.5
13	—	TV 20	197.0	60.0
14	—	TV 20	211.6	64.5
15	—	TV 20*	226.4	69.0

MOR
CRANE SERVICES
LTD
250-888-2721

660 Lorimer Place
Victoria B.C. V9B 6G3

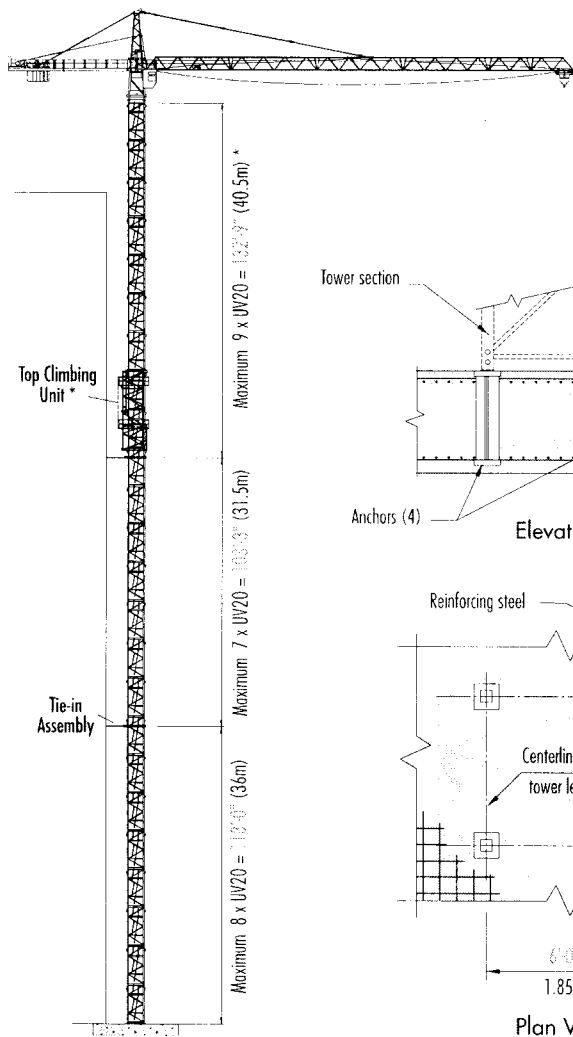
Configurations

Wolffkran 148 SL

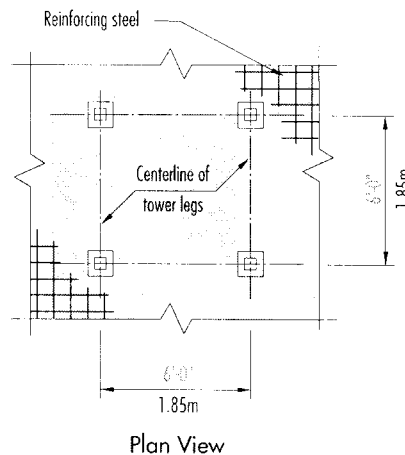
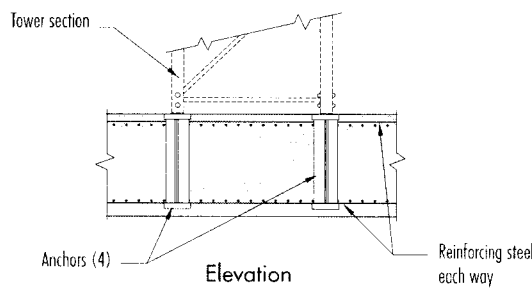


NOTE! If hook height exceeds 300'± (100.0m), the number of tower sections above uppermost tie-in location **MUST** be reduced by 2 tower sections.

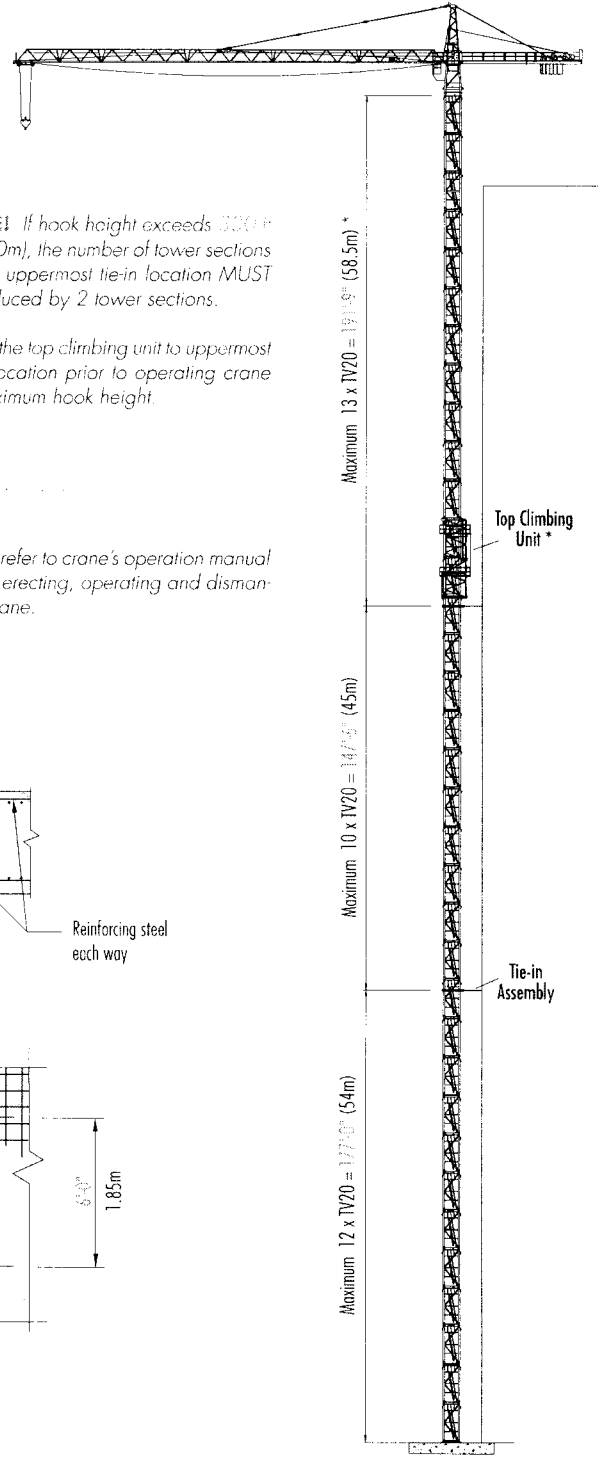
*Lower the top climbing unit to uppermost tie-in location prior to operating crane at maximum hook height.



**TOP CLIMBING
with UV 20 Tower Sections
(Tied to Structure)**



**FOUNDATION
(Concrete Slab)**



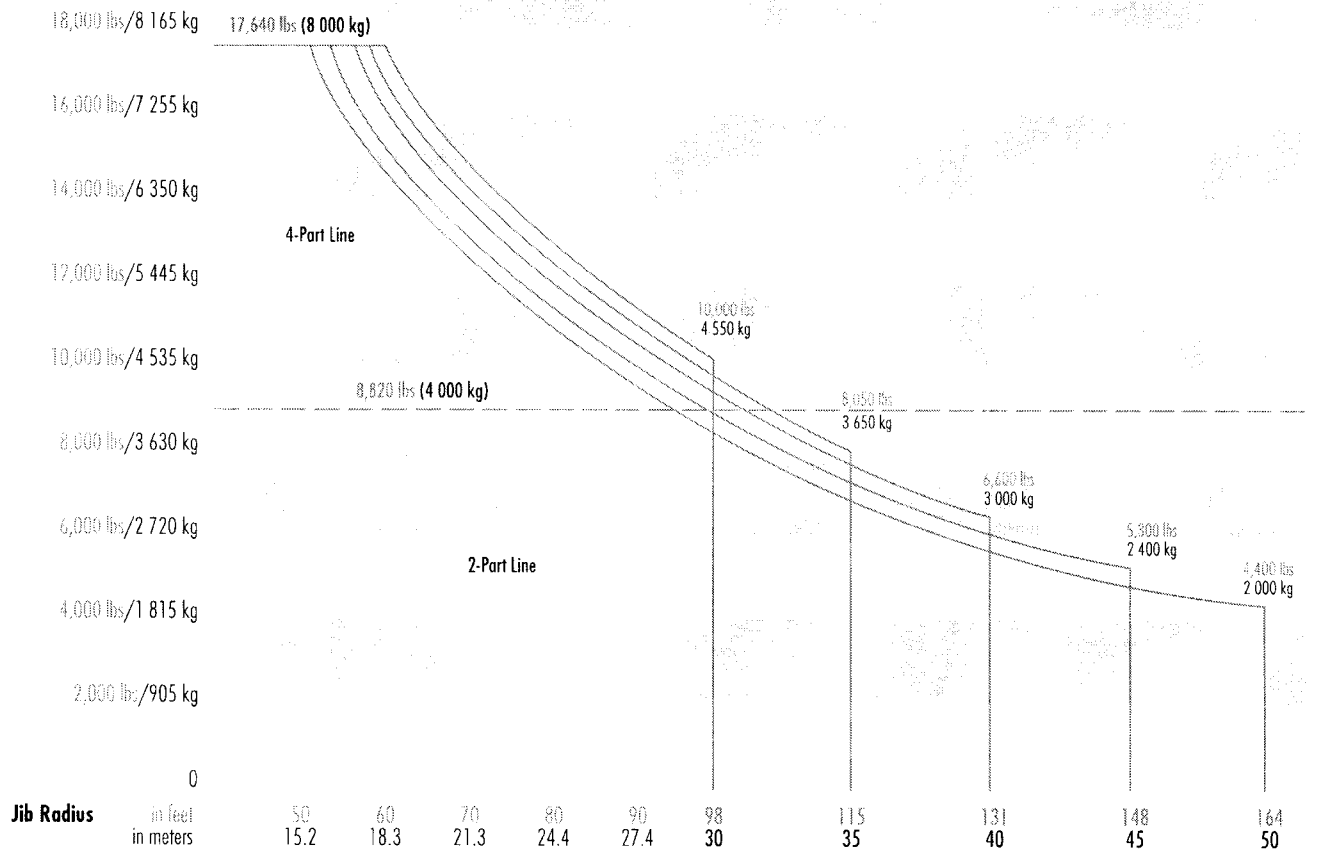
**TOP CLIMBING
with TV 20 Tower Sections
(Tied to Structure)**

Radius & Capacities

Wolffkran 148 SL

Hook	4-Part Line	2-Part Line	ft	49	66	82	98	110	115	120	125	131	135	140	148	155	160	164
Radius	Max Capacity - Radius	Max Capacity - Radius	m	15	20	25	30	33.5	35	36.6	38.1	40	41.1	42.7	45	47.2	48.8	50
164 ft	17,640 lbs - 52 ft	8,820 lbs - 96 ft	lbs	17,640	13,700	10,580	8,510	7,405	7,055	6,700	6,395	5,950	5,800	5,490	5,095	4,740	4,495	4,400
50m	8 000 kg - 15.9m	4 000 kg - 29.3m	kg	8 000	6 200	4 800	3 860	3 360	3 200	3 040	2 900	2 700	2 630	2 490	2 310	2 150	2 040	2 000
148 ft	17,640 lbs - 54 ft	8,820 lbs - 98 ft	lbs	17,640	14,110	10,935	8,820	7,695	7,310	7,010	6,635	6,175	5,995	5,710	5,300			
45m	8 000 kg - 16.4m	4 000 kg - 30m	kg	8 000	6 400	4 960	4 000	3 490	3 315	3 180	3 010	2 800	2 720	2 590	2 400			
131 ft	17,640 lbs - 57 ft	8,820 lbs - 104 ft	lbs	17,640	14,990	11,640	9,415	8,200	7,805	7,405	7,035	6,600						
40m	8 000 kg - 17.3m	4 000 kg - 31.7m	kg	8 000	6 800	5 280	4 270	3 720	3 540	3 360	3 190	3 000						
115 ft	17,640 lbs - 58 ft	8,820 lbs - 107 ft	lbs	17,640	15,410	11,970	9,680	8,510	8,050									
35m	8 000 kg - 17.7m	4 000 kg - 32.6m	kg	8 000	6 990	5 430	4 390	3 860	3 650									
98 ft	17,640 lbs - 60 ft	8,820 lbs - 98 ft	lbs	17,640	15,900	12,400	10,000											
30m	8 000 kg - 18.2m	4 000 kg - 30m	kg	8 000	7 210	5 620	4 550											

Capacity



SPECIFICATIONS

Tower crane model WK 148 SL

Hoist Speed and Capacity

Hoist Unit	Hw 4 76 3	2-Part Line				
102 hp (76.0 kW) AC hoist unit 3-speed gearbox Remote-controlled gear shifting Eddy current brake		Gear	Capacity	Line Speed	Capacity	Line Speed
		1	8,820 lbs @	290 fpm	4,000 kg @	88 m/min
		2	6,500 lbs @	380 fpm	2,950 kg @	116 m/min
		3	3,400 lbs @	640 fpm	1,540 kg @	194 m/min
		4-Part Line				
		1	17,640 lbs @	145 fpm	8,000 kg @	44 m/min
		2	13,000 lbs @	190 fpm	5,900 kg @	58 m/min
		3	6,800 lbs @	320 fpm	3,080 kg @	97 m/min

NOTE! Capacities and line speeds indicated will vary depending on the amount of hoist rope installed. This crane model may be equipped with a hoist unit other than that specified in data above. To verify, check the serial number of the crane and refer to the Wolffkran 148 SL Operation Manual for additional information.

Motor Information

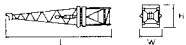

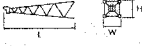
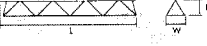


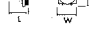
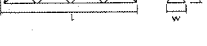
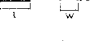
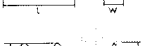





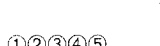

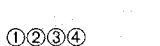

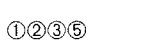
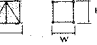
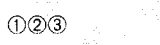
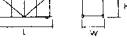
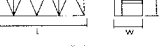

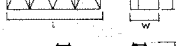


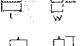
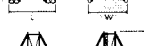
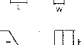

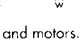



Drive Unit	Horsepower	Kilowatts	Speed
Trolley (Tw 50 FG)	6.0 hp	4.5 kW	79/156/316 fpm 24/48/96 m/min
Swing (Dw-FG)	2 x 6.2 hp	2 x 4.6 kW	0.9 rpm
Rail Travel (UW 260.2)	2 x 8.8 hp	2 x 6.6 kW	98.5 fpm 30 m/min
Rail Travel (UW 260.3)	4 x 6.4 hp	4 x 4.8 kW	98.5 fpm 30 m/min

Power Requirements

480 Volts — 3-phase — 60-cycle — 200 Amperes service with 102 hp (76 kW) hoist unit

Component List

Wolffkran 148 SL

Description	Dimensions L x W x H	Weight	Description	Dimensions L x W x H	Weight
Turntable & Tower Top without Cab	 35'-2" x 7'-1" x 7'-11" 11.03m x 2.16m x 2.4m	16,040 lbs 7 275 kg	Jib Section ①	 33'-5" x 5'-3" x 6'-1" 10.19m x 1.6m x 1.86m	3,725 lbs 1 690 kg
Tower Top	 23'-0" x 5'-10" x 6'-7" 7.01m x 1.77m x 1.98m	4,290 lbs 1 945 kg	Jib Section ②	 33'-6" x 5'-1" x 5'-8" 10.22m x 1.56m x 1.72m	2,945 lbs 1 335 kg
Turntable with Slewing Motors	 16'-2" x 6'-11" x 8'-0" 4.93m x 2.11m x 2.44m	11,730 lbs 5 330 kg	Jib Section ③	 33'-8" x 5'-1" x 5'-5" 10.26m x 1.56m x 1.64m	3,430 lbs 1 555 kg
Turntable Upper Part 1	 4'-8" x 6'-11" x 7'-6" 1.42m x 2.11m x 2.29m	5,250 lbs 2 380 kg	Jib Section ④	 33'-8" x 5'-1" x 5'-2" 10.26m x 1.56m x 1.57m	2,865 lbs 1 300 kg
Turntable Lower Part 2	 11'-7" x 7'-1" x 8'-0" 3.54m x 2.16m x 2.44m	6,500 lbs 2 950 kg	Jib Section ⑤	 17'-2" x 5'-1" x 5'-2" 5.22m x 1.56m x 1.57m	1,400 lbs 635 kg
Counterjib Section #1	 25'-4" x 5'-2" x 1'-10" 7.72m x 1.57m x 0.56m	3,030 lbs 1 375 kg	Jib Section ⑥	 17'-0" x 5'-1" x 5'-2" 5.19m x 1.56m x 1.57m	1,180 lbs 530 kg
Counterjib - Section #2 w/Fixed Counterweight	 21'-8" x 7'-11" x 2'-3" 6.6m x 2.41m x 0.69m	7,330 lbs 3 325 kg	Jib Tip	 6'-5" x 3'-11" x 1'-7" 1.96m x 1.2m x 0.48m	270 lbs 120 kg
Hoist Unit — Hw 4 76 3 (102 hp/76 kW) 3	 7'-1" x 10'-6" x 5'-1" 2.16m x 3.2m x 1.55m	7,000 lbs 3 175 kg	Jib Assembly 4 164-ft (50m)	 165'-6" x 5'-3" x 6'-1" 50.44m x 1.6m x 1.86m	18,700 lbs 8 480 kg
Operator Cab	 5'-8" x 3'-4" x 7'-3" 1.73m x 1.02m x 2.21m	1,000 lbs 455 kg	Jib Assembly 4 148-ft (45m)	 149'-1" x 5'-3" x 6'-1" 45.44m x 1.6m x 1.86m	17,500 lbs 7 940 kg
Trolley	 6'-11" x 5'-11" x 2'-8" 2.11m x 1.8m x 0.81m	660 lbs 300 kg	Jib Assembly 4 131-ft (40m)	 132'-8" x 5'-3" x 6'-1" 40.44m x 1.6m x 1.86m	16,100 lbs 7 305 kg
Hook Block 2/4-part Combination	 3'-9" x 7" x 5'-0" 1.14m x 0.18m x 1.52m	890 lbs 405 kg	Jib Assembly 4 115-ft (35m)	 116'-4" x 5'-3" x 6'-1" 35.44m x 1.6m x 1.86m	14,600 lbs 6 625 kg
Tower Section UV 20	 15'-10" x 6'-7" x 7'-4" 4.82m x 2.0m x 2.24m	4,300 lbs 1 950 kg	Jib Assembly 4 98-ft (30m)	 99'-11" x 5'-3" x 6'-1" 30.44m x 1.6m x 1.86m	13,300 lbs 6 055 kg
Tower Section TV 20	 15'-11" x 6'-8" x 7'-4" 4.84m x 2.03m x 2.24m	6,600 lbs 3 000 kg	Top Climbing Unit KWH 20.2	 29'-6" x 9'-4" x 9'-4" 9.0m x 2.85m x 2.85m	14,740 lbs 6 685 kg
Transition Section TVA 20	 15'-10" x 6'-7" x 7'-4" 4.82m x 2.0m x 2.24m	6,800 lbs 3 085 kg	Top Climbing Unit KWH 20.5	 34'-7" x 8'-4" x 9'-0" 10.54m x 2.53m x 2.75m	23,485 lbs 10 650 kg
Counterweight Block A	 3'-11" x 2'-1" x 6'-8" 1.19m x 0.63m x 2.03m	7,930 lbs 3 600 kg	Undercarriage UW 260.2	 21'-1" x 26'-0" x 16'-2" 6.42m x 7.93m x 4.93m	30,700 lbs 13 930 kg
Counterweight Block B	 3'-11" x 1'-4" x 6'-8" 1.19m x 0.41m x 2.03m	5,285 lbs 2 400 kg	Undercarriage KRE 260.3	 21'-1" x 26'-0" x 16'-2" 6.42m x 7.93m x 4.93m	37,800 lbs 17 190 kg
Counterweight Block C	 3'-11" x 7" x 6'-8" 1.19m x 0.18m x 2.03m	2,205 lbs 1 000 kg	Crossframe KRE 260.2	 19'-8" x 19'-6" x 14'-2" 6.0m x 6.0m x 4.32m	24,000 lbs 10 885 kg
Central Ballast Block A (for KRE/UW260.2, UW260.3)	 12'-6" x 1'-8" x 5'-2" 3.8m x 0.5m x 1.57m	11,025 lbs 5 000 kg	Central Ballast Block B (for KRE/UW260.2, UW260.3)	 12'-6" x 10" x 5'-2" 3.8m x 0.25m x 1.57m	5,512 lbs 2 500 kg

1 Includes race bearing, gearboxes and motors.

2 Does not include race bearing.

3 Does not include wire rope.

4 Jib assemblies include jib sections, pendants, trolley and trolley rope.

NOTE: Weights and dimensions are approximate. Scale components before lifting.